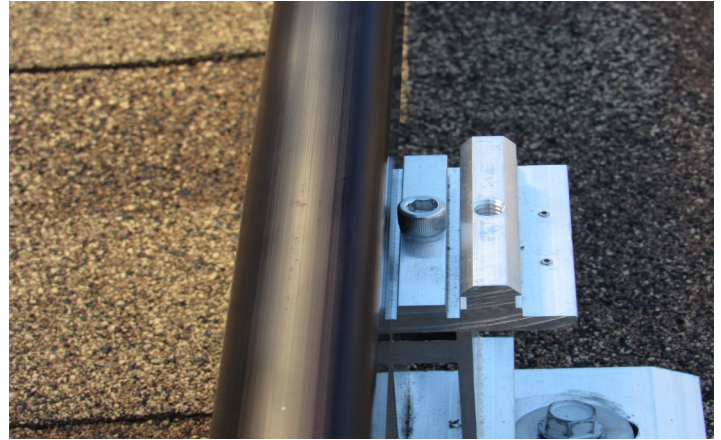


Array Snap-Skirt Installation Manual

Step 1:

Align.

Place skirt onto the open end of the A-Beam and Beast. Ensure Array Snap-Skirt is in line before snapping into A-Beam



Step 2:

Press Down.

Press down and towards the front of the A-Beam/Beast. The Array Snap-Skirt will snap into the A-Beam or Beast if correctly aligned.



Step 3:

Push in.

Holding the top of the Snap-Skirt, gently push the top until the Snap-Skirt snaps into the A-Beam. If the Snap-Skirt is not fully installed, slide the Snap-Skirt out and repeat steps.

